



OAKFIELD



Luffield Drive, Bexhill-On-Sea, TN39 4GD

Price Guide £475,000



Luffield Drive, Bexhill-On-Sea, TN39 4GD

A truly stunning four-bedroom detached family home, beautifully presented and ideally located on the highly sought-after Rosewood Park estate in Little Common. Built circa 2021 and benefitting from the remainder of a 10-year NHBC warranty, this exceptional property offers modern living at its finest with style, space, and comfort throughout. Occupying a peaceful, secluded position with attractive open green space to the front, the home enjoys an added sense of privacy and outlook.

Step inside to discover bright and spacious accommodation, including a charming bay-fronted living room and a spectacular open-plan kitchen/dining area—perfect for both everyday family life and entertaining guests. A convenient downstairs WC completes the ground floor.

Upstairs, the property continues to impress with four generously sized double bedrooms. The luxurious principal bedroom features a sleek en-suite shower room, while the remaining bedrooms are served by a contemporary family bathroom finished to a high standard.

Additional benefits include gas central heating, double glazing throughout, and high-quality fixtures and fittings.

Externally, the home boasts excellent kerb appeal with a low-maintenance front garden laid with artificial grass, alongside a driveway providing off-road parking for multiple vehicles and a carport. The rear garden has been thoughtfully landscaped by the current owners to create a private and tranquil outdoor retreat, featuring a stylish patio area ideal for al fresco dining, an artificial lawn, and secure fencing to all sides. Side access adds further convenience.

Perfectly positioned, the property offers easy access to Bexhill and Eastbourne via nearby bus routes, as well as scenic countryside walks on your doorstep.

Early viewing is highly recommended to fully appreciate everything this outstanding home has to offer.





Living Room

18'0" x 11'7" (5.49m x 3.53m)

Kitchen/Dining Room

19'4" x 14'3" (5.89m x 4.34m)

WC

Bedroom One

14'3" x 14'0" (4.34m x 4.27m)

Bedroom Two

18'6" x 10'6" (5.64m x 3.20m)

Bedroom Three

11'4" x 10'4" (3.45m x 3.15m)

Bedroom Four

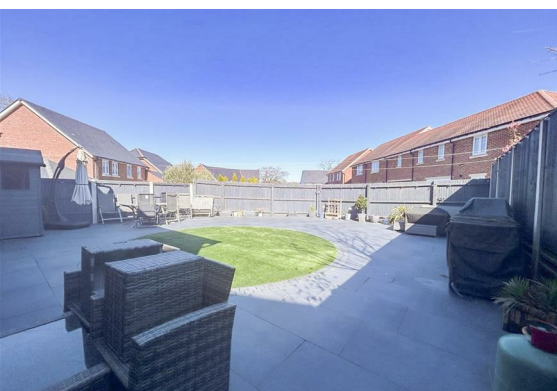
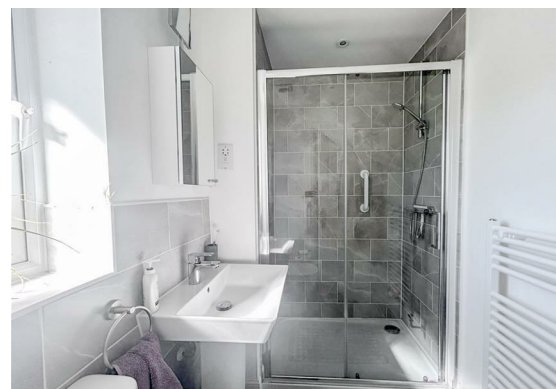
10'4" x 8'0" (3.15m x 2.44m)

Bathroom

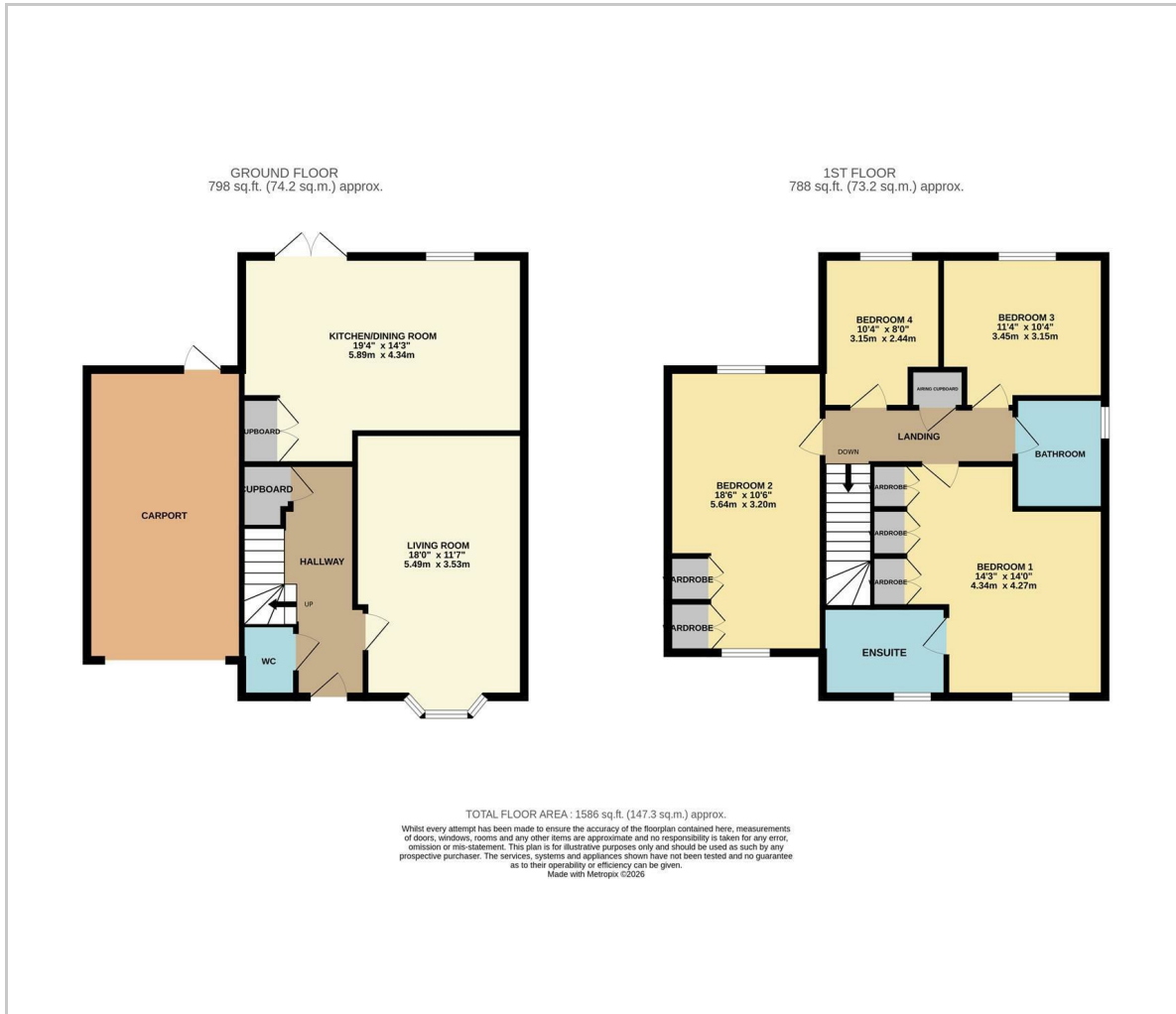
Ensuite

Council Tax Band F - £3,905.23 Per Annum

(Subject to change in April 2026)



Floor Plan

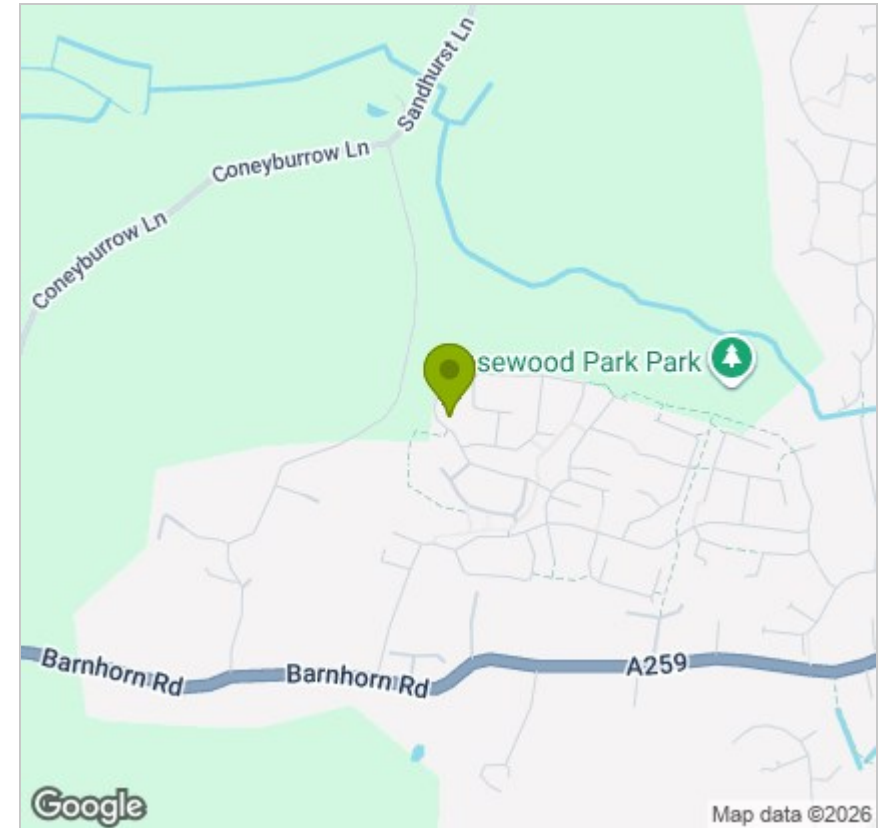


Viewing

Please contact us on 01424 224700 if you wish to arrange a viewing appointment for this property or require further information.

These particulars, whilst believed to be accurate are set out as a general outline only for guidance and do not constitute any part of an offer or contract. Intending purchasers should not rely on them as statements of representation of fact, but must satisfy themselves by inspection or otherwise as to their accuracy. No person in this firm's employment has the authority to make or give any representation or warranty in respect of the property.

Area Map



Energy Efficiency Graph

